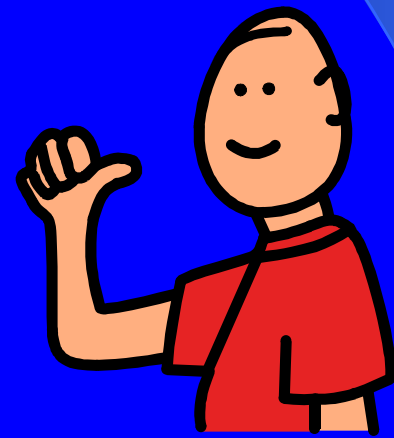


An easy guide to Direct Payments

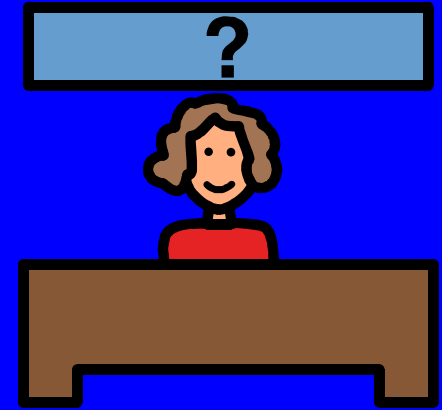


Giving you the choice
and control



Hampshire Partnership Board 2004

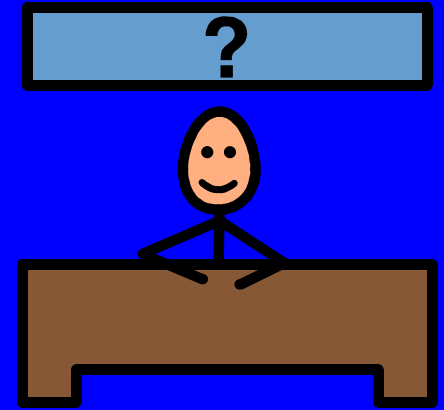
About Direct Payments



A Direct Payment is money your SOCIAL SERVICES can give you. It is a different way of getting the SUPPORT you need. You use it to buy the support you want.

Social Services give you the money instead of a SERVICE. You spend the money on getting the support you need.

About Direct Payments



Most people who use Social Services from the council could get a Direct Payment.

Your **SOCIAL WORKER** or **CARE MANAGER** should talk to you about Direct Payments when they look at what care you need.

From April 2003 all councils must tell people if they can get Direct Payments. This is a new rule.

How Direct Payments work



The government gives money to councils all over the country. This money pays for services - things like day centres, places to live and other types of support.

These services are run or paid for by Social Services.

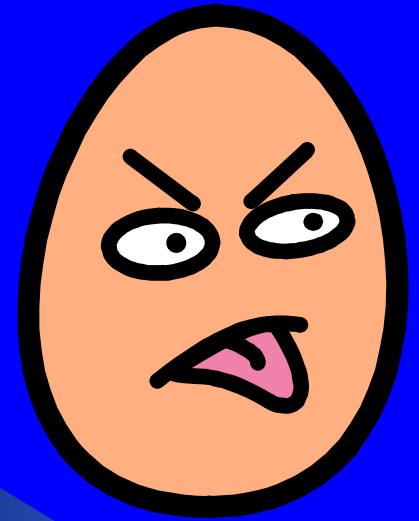
Social Services get a bit of money for every person with learning disabilities using services.



Social Services put all this money together.

When you get a service from Social Services. It is paid for by this money.

Some people are not happy with the support they get from Social Services.

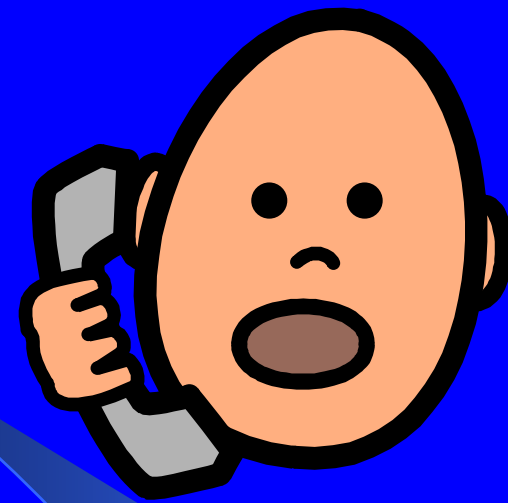


Some people want to do new or different things.



Now they can choose to have a Direct Payment instead of using services.

Social Services **must** tell you if you can get a Direct Payment



If you say yes to a Direct Payment, you take your bit of money back.

You spend this money on getting support that you choose. You must spend it on support that Social Services agree you need.

Things you should know



- ✓ Most people who use Social Services could get a Direct Payment.
- ✓ They can't make you have a Direct Payment if you don't want one.
- ✓ Direct Payments are a good way of you being the boss of your own life. You are in charge. You choose what services you use, when you use them and who you get them from.

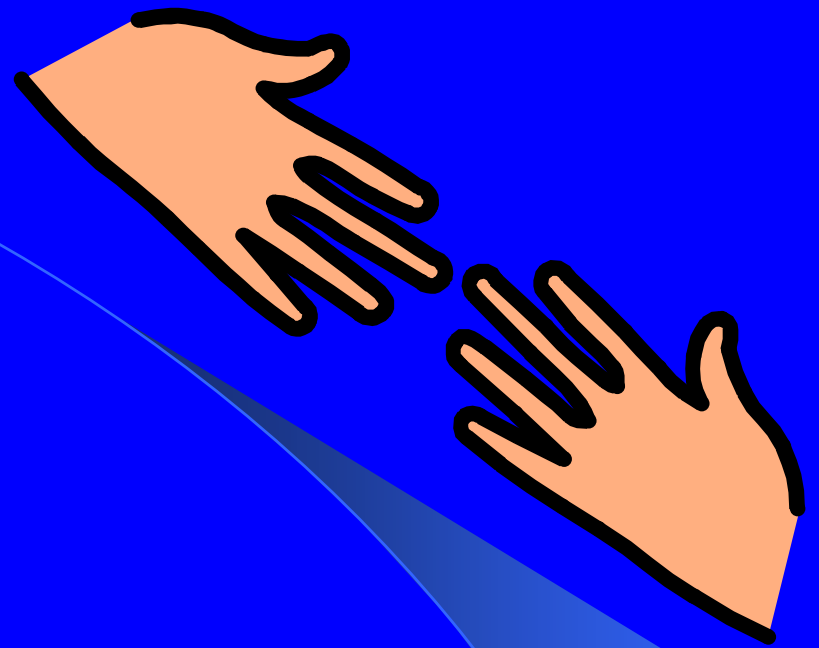
✓ You must have a bank account for the Direct Payment. If you don't have one now, it is easy to set up.

✓ You will need to write down how you spend your Direct Payment. Lots of people get someone called a book keeper to help with this.

✓ You could use an agency. An agency is a business that sells you care services, like support staff.



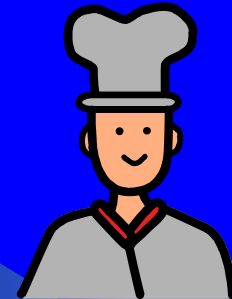
Support



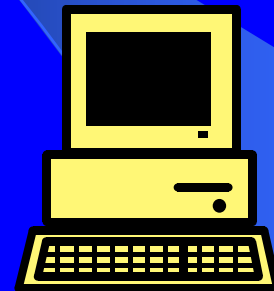
Most councils have set up **Direct Payments Support** to help people use Direct Payments. They can help you understand and run your Direct Payment. They sort out some of the hard things with you.

Things People do

Pay someone to support you in a job.



Pay someone to support you at collage.



Get support with personal care

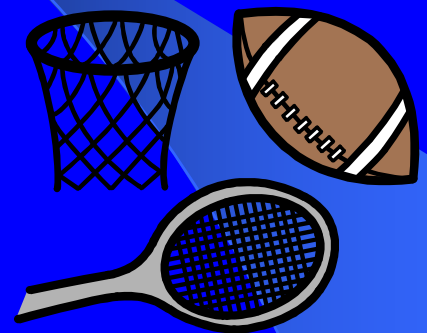


Things People do

Get support with cooking or cleaning your house.



Get support to do sport or leisure.

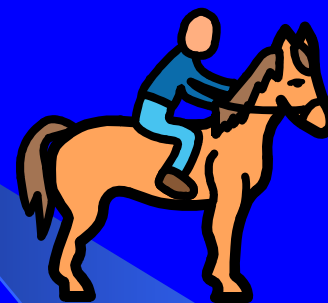


Get support for a short break.

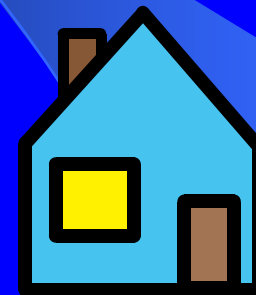


More things people do

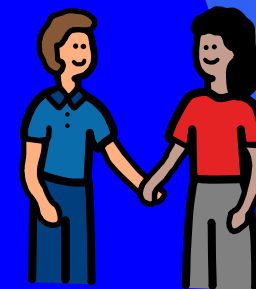
✓ You can get support during the day instead of going to the day centre.



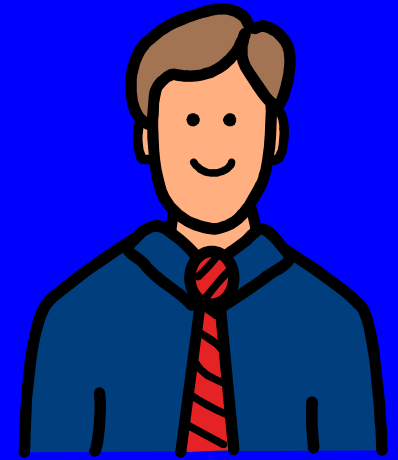
✓ You can get support to live in your own home instead of living in a care home.



✓ You can get your own support worker, sometimes called a personal assistant.



Can and can't do



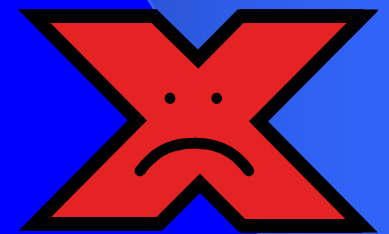
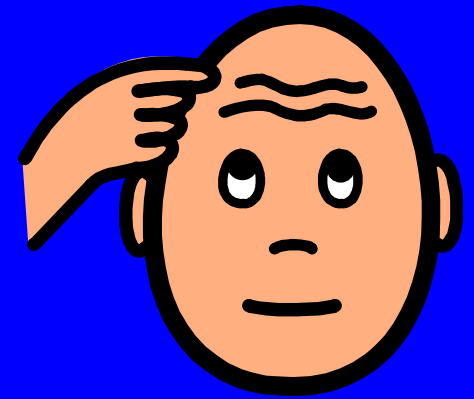
The council will let you know what you can and can't spend the money on.

You need to tell them your plans for buying services. If you still want to use some Social Services the council might be able to sort out a mix of Direct Payments and Social Services

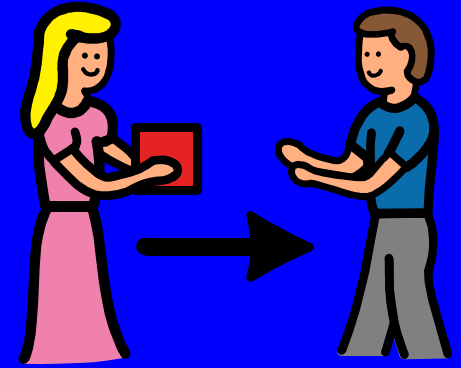
Is it right for you?

You can talk to your friends, supporters, your local speaking up group or your social worker or care manager. They can help you work out what you want. Here are some things you could think about.

- ARE YOU HAPPY WITH THE SOCIAL SERVICES YOU USE?
- WOULD YOU LIKE TO BE MORE INDEPENDENT?
- DO YOU WANT TO BE MORE IN CONTROL OF WHO SUPPORTS YOU?

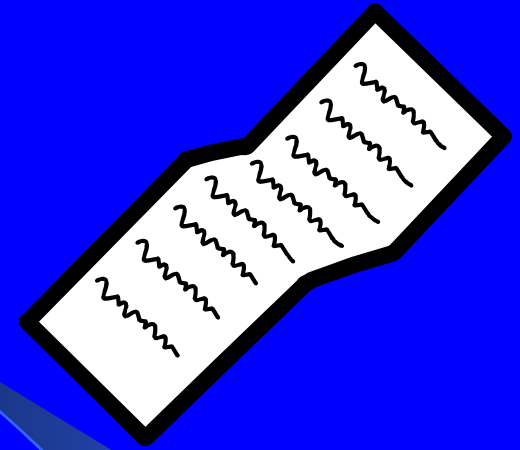


Getting Direct Payments



- ❑ Talk to your social worker or care manager.
- ❑ You will need to have an assessment.
- ❑ Before your assessment it is a good idea to keep a diary to see what help and support you need each day.
- ❑ Decision time. If social services say you need support, they must give you the choice.
- ❑ Setting it up. There will be lots of paperwork that needs doing. But you don't need to do this on your own.

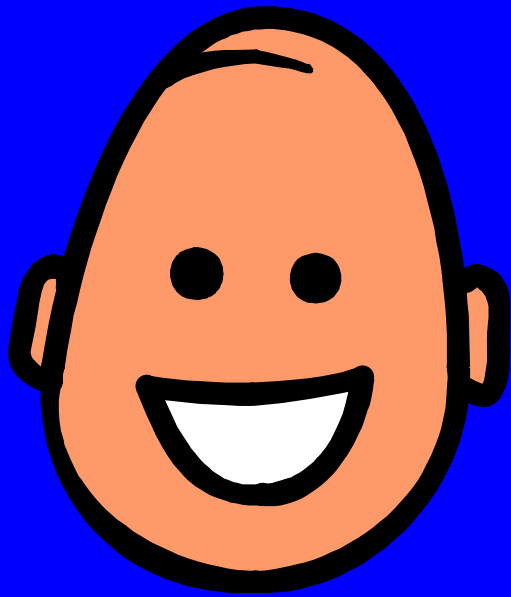
Setting it up



You need to show the council that the services you want to buy with your Direct Payments money will give you enough support.

It is up to you to set up your own support services. You will also need to show how you are spending the money. Your local Direct Payments Support can help you with this.

**We are happy to answer
any questions you have
about Direct Payments.**



Useful Contacts



- ✓ Your local council or social services
- ✓ NCIL, 250 Kennington Lane, London SE11 5RD
Tel; 020 7587 1663 Email: ncil@ncil.org.uk
- ✓ VIA, Oxford House, Derbyshire Street, London E2 6HG
Tel; 020 7729 5436
Email: general@viauk.org
- ✓ LD Helpline, 123 Golden Lane, London EC1Y 0RT
Tel; 0808 808 1111 Email: help@mencap.org.uk